



Tawhid

BOYS SCHOOL

BELIEVE | ASPIRE | ACHIEVE

PROSPECTUS CURRENT



Tawhid Boys School | 21 Cazenove Road, London, N16 6PA | Tel: 020 8806 2999 | Email: info@tawhid.org.uk

Tawhid Boys School is a project of Tawhid Educational Trust | DFES No. 2046407 | Charity Registration No. 1085204



A BRIEF HISTORY

In the month of July 2000, members of the Stamford Hill community met to take the first steps towards establishing a Muslim Boys School.

A Charity in the name of Tawhid Educational Trust was founded under whose auspices would run Tawhid Boys School.



Contents

Welcome	3
Mission & Vision	4
Our History	6
Expansion	7
PHSCE Personal Care	9
Curriculum & Assessments	13
Recognising Pupils Achievements	16
Admissions	18
How to Find Us	20

*"Pupils are proud of their school.
They talked enthusiastically
about the school's positive ethos.
Pupils also appreciate the
extra-curricular activities
on offer."*

(OFSTED, July 2022)



Welcome to Tawhid Boys School

Assalaamu-Alaykum

The very first verse that was revealed to our beloved Prophet Muhammad (PBUH) by Almighty Allah outlines firstly the attribute of the One who creates and secondly the creation, who is totally dependent on Allah. The verse also emphasises that it is a duty on all Muslims to educate themselves so that they may gain knowledge. The first word revealed was: READ! Reading is one of the best ways to gain knowledge.

“Knowledge raises a human being to a higher position than other creatures of creation. Because of knowledge, we can gain wisdom, and that is one of the greatest gifts a person can have. Wisdom gives you the ability to know right from wrong; it is like a light, which allows you to see in the darkness. When people are lost in ignorance and going astray, the person with knowledge becomes a beacon of light; he shines out amongst the rest and shows them the way to safety” (acknowledgements to Br. Yusuf Islam).

Muslims have with great enthusiasm excelled in the acquisition of knowledge. Centres of Knowledge can be traced back in our Islamic history to the very first one established in the time of our Prophet Muhammad Sallallahu Alayhi Wassallam, which continues to grow and flourish creating such great personalities who became beacons of light and guidance for the Ummah. Tawhid Boys School has been established by the Grace of Almighty Allah, with this intention. That it will provide an Academic and Islamic education within an environment that will nurture the talents and potential of our children, equipping them with the necessary skills and moral qualities, and thus preparing them as citizens in tomorrow’s world, Insha-Allah

The fruits of our endeavours will only be realised when our lives are moulded and our actions are in accordance to the Sunnah of our Prophet Muhammad (PBUH). To achieve this is our collective responsibility and we the school, request you the parents to help us to help our children.

May Allah assist us and except our endeavours, Ameen.

Was-salaam

Br. Abdul Ghani Alibhai
Chair – Tawhid Educational Trust

"Staff have high expectations and pupils respond to these well."

(OFSTED, July 2022)

Mission & Vision

At Tawhid we aim to provide our students with:

- A high standard of academic and Islamic education
- A safe and secure learning environment in which all members of the school community can achieve their best
- An outstanding broad and balanced Curriculum, within the tenets of Islam, which inspires our pupils and enables all our students to acquire understanding, knowledge and skills appropriate to equip them for the 21st Century
- Learning experiences, which challenge, build self-esteem and confidence and so enable our students to take up their responsibilities as adults and members of society they live in.

"Read! In the name of your Lord who hath created; created man from a clot.

Read! And your Lord is the most bounteous, who teaches by the pen, teaches man that which he knew not."

The Holy Qur'an, 96:1-5



New Annex

The 4-storey building will comprise of:

"Leaders ensure that pupils are prepared well for life in modern Britain."

(OFSTED, July 2022)

1



Ground floor dining area



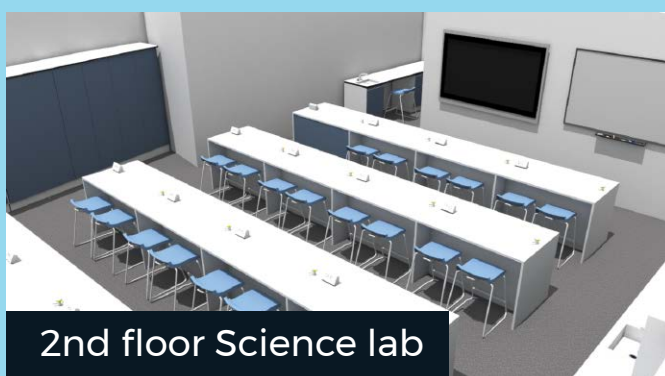
2



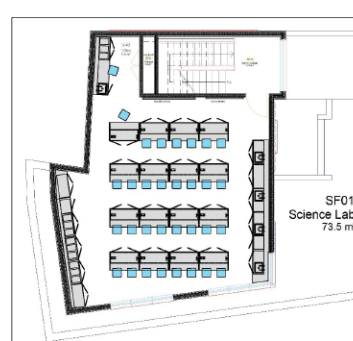
1st floor DT workshop



3



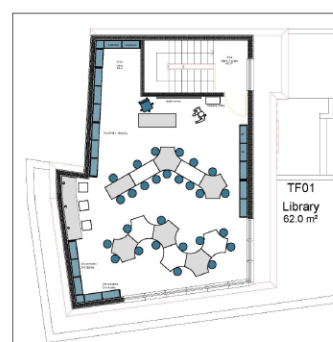
2nd floor Science lab



4



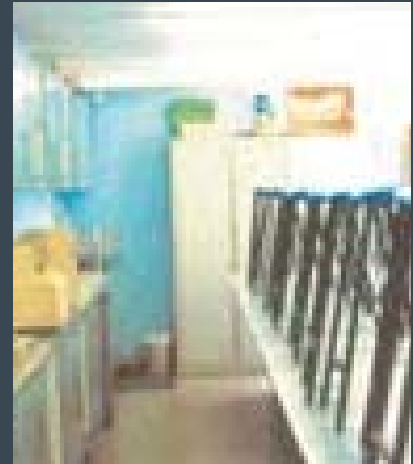
3rd floor library & classroom



Our History

In the month of July 2000, members of the Stamford Hill community met to take the first steps towards establishing a Muslim Boys School.

A Charity in the name of Tawhid Educational Trust was founded under whose auspices would run Tawhid Boys School.



Phase 1

- First Term started in Sep 2000 with 40 pupils and 3 teachers
- Based within the premises of North London Mosque Trust
- Education concentrates on Key Stage 2 & 3
- School makes effort to acquire own premises in Feb 2001 and starts major funding exercise
- New premises identified in Apr 2001 and purchased
- School year ends with 61 pupils and 6 teaching staff
- Refurbishment of new premises commences

Phase 2

- Sep 2001 starts with 75 pupils
- Work completed on new school building in Oct 2001
- IT Lab constructed with donated equipment
- Pupils and Staff transferred to new building in Nov 2001
- Land at back of School identified and targeted for acquisition

Phase 3

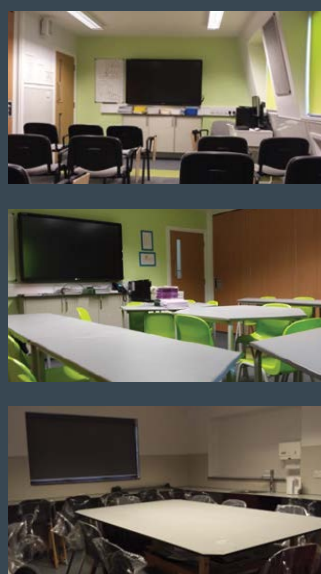
- Work commences on expansion of existing building in Aug 2003
- Construction of Science Lab completed
- Full DFES Registration acquired Nov 2003
- IT Lab refitted / Teaching staff expanded
- Premises further expanded in Aug 2005 with an additional floor

Expansion - Summer 2015

The proprietor and governors have been in post since the school was established in 2000. They are extremely devoted to the school and carry out their responsibilities with firm commitment.

Current Expansion Project: Phase 1 - Completed September 2015

- Construction of new extension to improve current classroom accommodation
- Additional facilities on site for Changing rooms shower facilities and first aid room
- Building refurbished extensively with up to date decor, furniture and IT resources
- New Art room to provide GCSE Art



Phase 2: Fire escape enclosure to provide internal staircase to all rear classrooms & Additional specialist teaching rooms

- Construction of new extension to improve current classroom accommodation
- Additional facilities on site for Changing rooms shower facilities and first aid room
- Building refurbished extensively with up to date decor, furniture and IT resources
- New Art room to provide GCSE Art

"O mankind! We created you from a single (pair) of a male and a female, and made you into nations and tribes, that ye may know each other (not that ye may despise each other). Verily the most honoured of you in the sight of Allah is (he who is) the most righteous of you. And Allah has full knowledge and is well acquainted (with all things)"

(Al-Qur'an 49:13)



PSHCE Personal Care

Safeguarding

The School is committed to providing a safe, caring and welcoming environment where every child is able to reach their full potential free from harm, abuse and discrimination. All staff and volunteers are expected to discharge their safeguarding responsibilities effectively and recognise that high self-esteem, confidence, peer support and clear lines of communication with trusted adults helps all children, especially those at risk of or suffering abuse, to thrive.

What we expect from students

We at Tawhid believe each child is a Gem and through the combined efforts of the School, Pupil and Parents, each child will succeed to achieve to their full potential, Insha Allah.

Home School Partnership

In addition to the school, parents play a very prominent role in the moral upbringing and academic achievements of their children. The School emphasises a strong triangular relationship between the school, parent and pupil. All three components are required for the success of a child.

The school requires that all parents support the school with its policies and regulations. Where there is co-operation, pupils have a better chance of achieving the desired moral and academic objectives.

A mutual co-operation and understanding between the school and the parents is vital. Parents should continually monitor the progress of their child at school.

Tarbiyah (Personal Development)

Our children will have a holistic school experience. It is imperative that they develop qualities that allow them to take up their responsibilities as adults and members of society they live in.

We offer a broad range of valuable life experiences to our pupils through engaging with the wider community through a range of community projects for which the school has achieved national recognition such as the Outstanding Sustainable Travel Accreditation, Healthy School Status and the London Schools Environment Award.

Our weekly Theme is based on a Hadith and Aamal of the week (sayings and actions of the Prophet Muhammad, Peace and blessings be upon him). Pupils gain a practical understanding of the Hadith which they value and appreciate as part of their personal development. If our schools and other educational institutions are to become beacons of light which nurture love of learning, then we must closely analyse the process of education and synthesize the aim of Islam - submission and service to the Ever-Living God and Master of the Universe. For this, we need a clear vision of the role of the teacher, the school, the home and the society in which we live.

"All pupils study a well-planned personal, social, health and economic (PSHE) education programme. This helps pupils to learn about the importance of making responsible and safe decisions in a range of contexts"

(OFSTED, July 2022)

Objectives:

- A strong partnership between the home and school
- Promote positive relationships
- Provide the highest quality of education
- An opportunity to involve parents and the community in our work
- And welcome their assistance in as wide range of activities as possible.
- To strengthen mutual respect and understanding between parents and school personnel.
- To join parents and schools together to guide each child towards knowledge and independence
- We seek to share information and knowledge that will support student, parents and teachers.

To achieve an effective partnership we need to have:

(1) PARENTS:

Enable families to share information about culture, background, children's talents and needs with schools. Assure that all information for and from families is clear, usable, and linked to children's success in school at each age & key stage. Assist schools in understanding families.

(2) COMMUNICATION:

Communicate with families about school programs and student progress through effective school-to-home and home-to-school communications. The school communicates through a range of mediums and parents can access staff through emailing, text messaging, telephone, letters / notes, Student planners or by making an appointment to meet staff. Parents can also access real-time performance data via the secure school parent portal.

(3) VOLUNTEERS:

Improve recruitment, training, work, and schedules to involve families and members of community as volunteers and audiences at the school or in other locations to support students and school enrichment programs. Parents are welcome to attend class assemblies and programmed school trips.

(4) LEARNING AT HOME:

Involve families with their children in learning activities at home, including homework and other curriculum-linked project based activities.

(5) COLLABORATION WITH THE COMMUNITY:

Coordinate resources & services for families, students, and the school with businesses, agencies, and other groups, and provide services to the community.

School Discipline

At Tawhid Boys School, we believe strongly in 'Adab', self-discipline and self-respect. Part of this is self-organisation. For our staff and students in school, this means being punctual, attending regularly and being suitably equipped and prepared to learn.

At Tawhid Boys School we have a student code of conduct, which informs our students of what is expected of them in relation to their own behaviour and behaviour towards others.

Personal Appearance

Students are expected to come to school looking neat and tidy in correct uniform. We request the co-operation of parents in ensuring that their child is appropriately dressed as per School Policy. Cleanliness and personal hygiene is half of one's faith and therefore we expect our students to be clean and dressed in clean garments.

Attendance and Punctuality

Punctuality is an important element of civilised behaviour, so a serious view will be taken of persistent lateness. The proper place for students to be on a school day is in school. Where persistent absences continue, if we feel we do not have the co-operation of the parent in this matter, the school will seek advice from the Social Services and take appropriate action. Parents are kept well informed of any cause for concern through regular daily monitoring and text messaging for any unauthorised absences and poor punctuality.

Parents can also access real-time data by logging into the school 'MyChild' parent secure portal which will provide up to date information on attendance, punctuality, behaviour and assessment data.

The Students Shura Council

At Tawhid, we believe in our students learning the way of our beloved Prophet Muhammad S.A.W, by learning to participate in consultations. We have therefore a Student's Shura Council. This includes two students elected from each class meeting with a member of the Leadership team. Meetings take place on a monthly basis to discuss issues of importance to the students. This allows students to collectively present and share their concerns and ideas with the Management, forming a direct communication link. This also enables our students to develop a greater sense of ownership over their school.

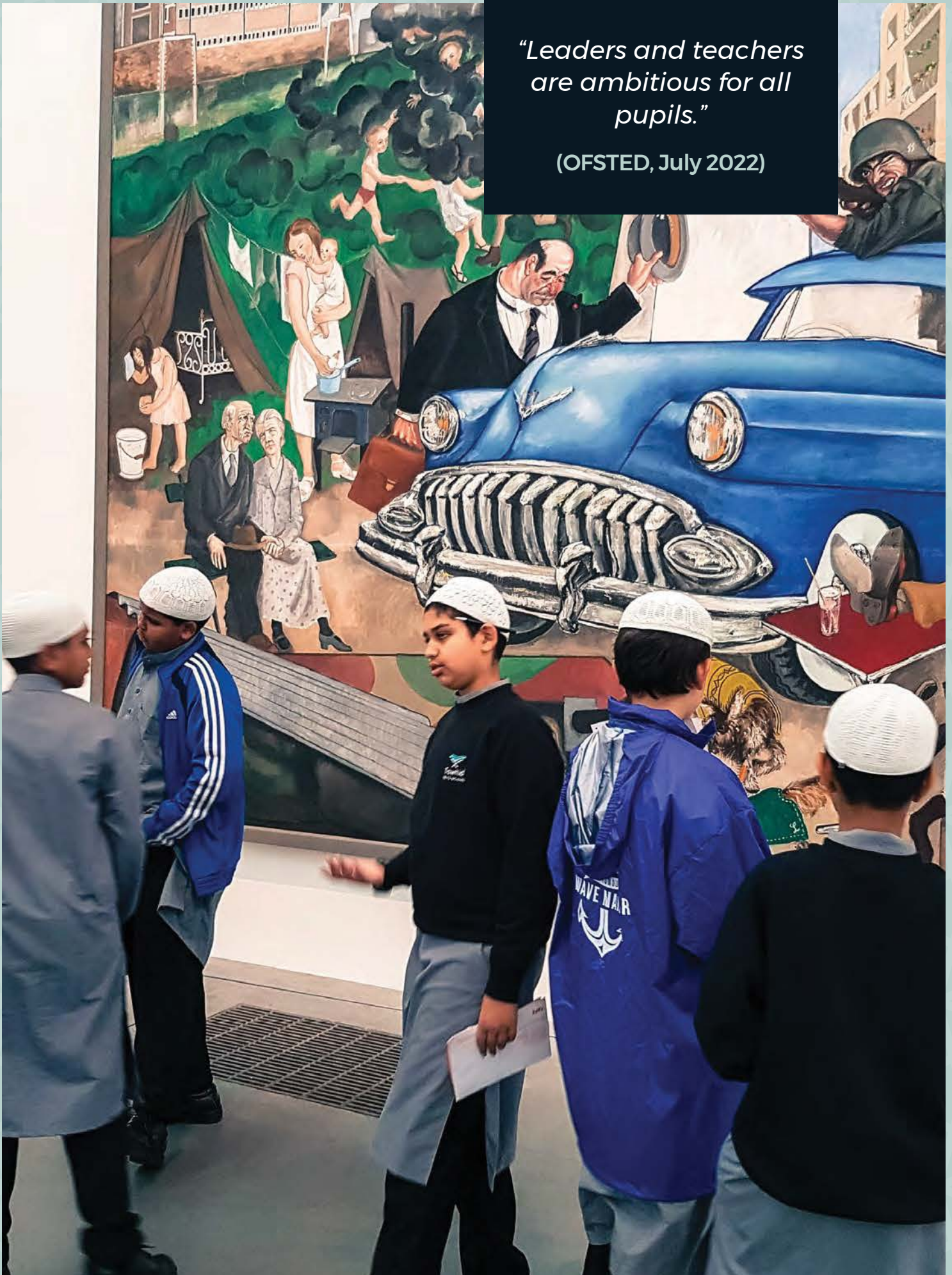
The Pupil Shura is an active body and has an Agenda set out on an annual basis in an Action Plan. They have contributed to the development of the cycle storage shed, School Library, a range of activities in PE, the school minibus, after school clubs and have raised funds for numerous charities.

"Leaders foster a strong sense of community. They are determined to support pupils to develop into confident young people who have empathy for others "

(OFSTED, July 2022)

*"Leaders and teachers
are ambitious for all
pupils."*

(OFSTED, July 2022)



Curriculum & Assessments

The Curriculum

The broad and balanced curriculum at Tawhid aims to provide moral and academic excellence for all its pupils. The continuation and success of this depends on the contribution of staff, pupils and, parents. As parents and carers, we need to be actively involved in the moral upbringing and academic achievements of our children. Pupils follow closely the National Curriculum subjects as well as Arabic language, Quran and Islamic Studies. Students are taught in mixed ability groups and with work being differentiated to cater for all abilities.

Additional subjects may also be offered on a one year course. Class sizes are smaller than state schools allowing more time for one to one teaching. After school and Saturday booster classes are time-tabled throughout the year for all classes taking external examinations in various subjects. An intensive programme of Boosters will run for Year 11 pupils from September till May.

As well as traditional subjects, the school offers a range of skills based programmes to allow pupils to develop real-life functionality. At KS3 emphasis is on pupils to develop core functional Skills in English, Mathematics and ICT. At KS4, pupils complete a range of WorkSkills and Career development programmes, Work Experience and the Duke of Edinburgh (DofE) Bronze and Silver Award.

Special Educational Needs

Students experiencing learning difficulties are catered for by Special Education Needs (SEN) provision. An Individual Education Plan is formulated for the pupil. Targets are set by the SEN co-ordinator and subject teachers working together with the parents and the pupil. A review of the IEP will take place twice a year.

Year	Key Stage	Subjects	Assessments
7-8	3	English, Mathematics, Science, History, Geography, Qur'an, Islamic Studies, Religious Education, Arabic, Art, P.E, Computer Science & PSHE.	GL Assessments Unit Assessments End of Year Final Assessment.
9	3/4	GCSE's (Intermediate Year) English Language, English Literature, Mathematics, Science Combined, Computer Science, History, Qur'an, Religious Education, Arabic. Non GCSE's -Geography, Art, P.E & PSHE.	GL Assessments Unit Assessments End of Year Final Assessment.
10	4	GCSE's :English Language, English Literature, Maths, Science (Double/Triple), History, Computer Science, Arabic, P.E. Non-GCSE's - Quran, Islamic Studies and PSHE.	GL Assessments Mock GCSE's
11	4	GCSE's :English Language, English Literature, Maths, Science (Double/Triple Award), History, Computer Science, Arabic, P.E. Non-GCSE's - Quran, Islamic Studies and PSHE.	Mock GCSE's & GCSE Exams.

Collective Worship

On Tuesday there are class assemblies which pupils present on their chosen topic and on Thursday afternoon there is a Lower / Upper school assembly, which is based on a National theme for the week. The school provides the opportunity for all pupils to perform congregational (Jamaat) Salaat daily. Prayer times are integrated within the school time-table. On Friday, school finishes at 12.40 pm, allowing students to attend Salaat-ul-Jum'ua.

Physical Education

All pupils undertake Physical Education (P.E) throughout their school life. Activities include: football, athletics, biking, canoeing, basketball, hockey, rugby, cricket, tennis, handball, swimming, softball, volleyball, rock climbing and badminton. We at Tawhid encourage pupils to keep fit and healthy.

Sustainable Travel

Tawhid has attained the Outstanding School Sustainable Award from TfL since July 2010 for its pioneering programme and commitment towards contributing to improving sustainability.

This is a great achievement and would not be possible without the continuous support and hard work of the pupils, staff, parents and Management.

Healthy School

Tawhid Boys School had achieved Healthy Schools status in July 2010. Pupils are encouraged to adopt healthy lifestyle via the following four themes:

1. Personal Social Health, Citizenship, Economic Education (PSHCE)
2. Healthy eating
3. Physical activity
4. Emotional health & wellbeing



RSHE

With the highest level of modesty and morality in mind, RSHE is taught as modules through the Religious Studies, PSHCE and Science programme of study. Aspects of RSHE and Health Education are also addressed through other curriculum subjects such as Computer Science and P.E. Teachers will adopt a variety of teaching and learning styles which will include quizzes, discussions and group work. There may be opportunities across the curriculum and enrichment activities, with specially selected guest speakers where appropriate.

Staff

At Tawhid we have a team of dedicated well qualified staff that aim to provide a high standard of education. The School encourages and supports its staff for Continuing Professional Development. The School provides various programmes at different levels across the subjects and phases to ensure staff are up to date with new developments.

Homework and Home Study

Parental support is essential in maintaining effective learning. Homework and home study is an integral aspect of the curriculum, enhancing the academic progress of the pupil. The approximate time that is to be devoted to homework per subject is:

Key Stage 3	30-45 minutes per subject each day
Key Stage 4	60 minutes per subject each day

In addition, pupils will be required to complete control assessments at key stage 4, and other set projects as required (during weekends and holidays).

Reports and Assessments

A full academic report and assessment of the student will be given to parents at the end of each academic year. Parents are invited to discuss their child's progress twice a year at the Pupil Progress Review Evenings held in October and February.

Parents are also welcome to arrange an appointment to discuss their child's progress during the course of the year with Tutors or subject teachers.

Reports are distributed according to the following schedule:

Pupil Progress Academic Review Year 7- 11 Pupil Progress Review Year 7-10 End of Term 2 Interim Reports	October February April
Year 7 - 10 End of Year exams End of Year Report Year 7- Year 10	May-June Summer Term (July)
Year 11 Mock Exams Year 11 Parents Evening	December January

"Pupils are happy at this school. They enjoy learning a broad range of subjects, including Religious studies. Staff ensure that pupils are ready for the next stage in their education."

(OFSTED, July 2022)

Recognising Pupils Achievement

LOGBOOK Awards

Every class in the school has a logbook that the teacher uses to record the general level of behaviour, effort and quality of class work and homework produced by the class and individuals during each lesson. Form Tutors also award points for excellent attendance, punctuality, organisation, service to the school, classroom monitors for recycling and healthy lunch. Mashallah points are recorded daily with certificates and prizes awarded to the class with the highest point each half term. The class with the highest point total at the end of the year receives the 'Logbook Trophy', which is displayed in the school, and an additional class outing the following year. The pupil's individual points are also calculated and recorded and the top twenty pupils in the 'Logbook League' at the end of the year all receive certificates and prizes for their achievements.

Annual Sports Day

Finally, to round off the year, a Sports Day to celebrate and reward everyone's achievement takes place.

Trophies and medals are awarded for events and the winners of the Log Book Awards.

Enrichment

A number of interesting residential and enrichment events are organised to stretch the agility and minds of our pupils beyond their expectations. Some of which include international exchange trips as part of projects and activity trips such as mountain biking, canoeing, rafting, trekking, competitions between houses such as 11 a-side and five a-side football tournaments and poetry and taboo competitions.

Newsletters

A half termly newsletter is produced covering a range of articles from special events, activities, competitions, current issues, quiz, collection of pupils work, messages etc.

It is then distributed to all parents and members of the community informing them of activities and progress at the school. The Newsletters can be also viewed on the School Website. The School also distributes news through social media on Twitter and Facebook.



Work Experience

Work experience forms a very important part of life in year 10 at Tawhid Boys School. It offers every pupil the opportunity to develop an understanding of the world of work. This is thanks to the close co-operation between the school and the local business community.

Work experience introduces an individual to a wide range of job opportunities. Each individual will be encouraged to explore the areas of work most suited and appropriate to their own individual needs and personalities and they are shown many of the skills required to enter employment. Progress is carefully monitored and every student receives support, encouragement and guidance from school staff, careers advisors and members of the business community.

Tawhid has achieved The Quality in Careers Standard Accreditation.



Olive School



Careers Development & Raising Aspirations

We are committed to raising the aspirations of our young people and to provide them with STEM & Career opportunities to improve their life chances.

We have in the process developed partnerships with a range of institutions, organisations and external agencies. Being a small community school we have cherished the opportunity of working with the public sector and have enjoyed the positive response from them giving our pupils the experiences they fully deserve. We are committed to work in partnership with all our partners and we are sure this is going to be one that continues to build and be a great model for others to follow in the future. Our partnership is built on good trust, mutual understanding and a real commitment to achieving success.

Career Events



Admissions Policy

Admissions Procedure

This section has been prepared to give you clear information about the application and entrance procedures at Tawhid Boys School.

We consider every individual application on all the available information. We want to be sure that the school is the right choice for your son and that he will be happy here.

If your son has been assessed for special needs, please forward the report from the Educational Psychologist together with your Application Form.

If your application is successful, an interview will be arranged for you and your son to attend.

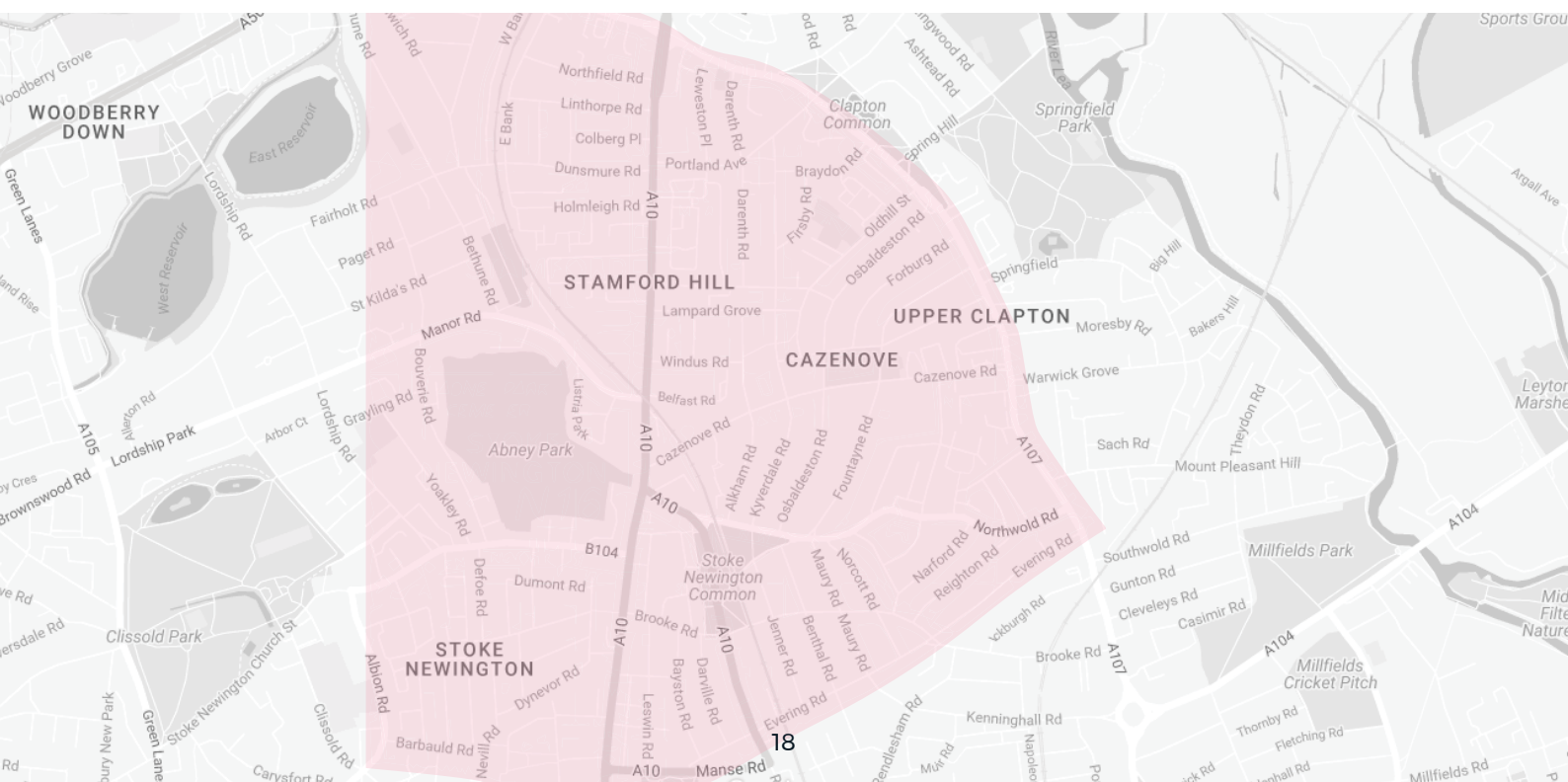
Open Days

We have a programme of dates in the year. These dates will be published on the website or call our Admissions Registrar for further information.

Application Procedure

Parents are required to complete an Application Form for their child and this must be accompanied together with a valid Birth Certificate and child's latest two full school reports. All contacts regarding admissions should be made to the Admissions Registrar. Tawhid Boys School is a fee paying school.

Catchment Area



Admissions - Guidance Notes

It is vital that parents ensure that their applications are submitted by the deadline set by the school's management.

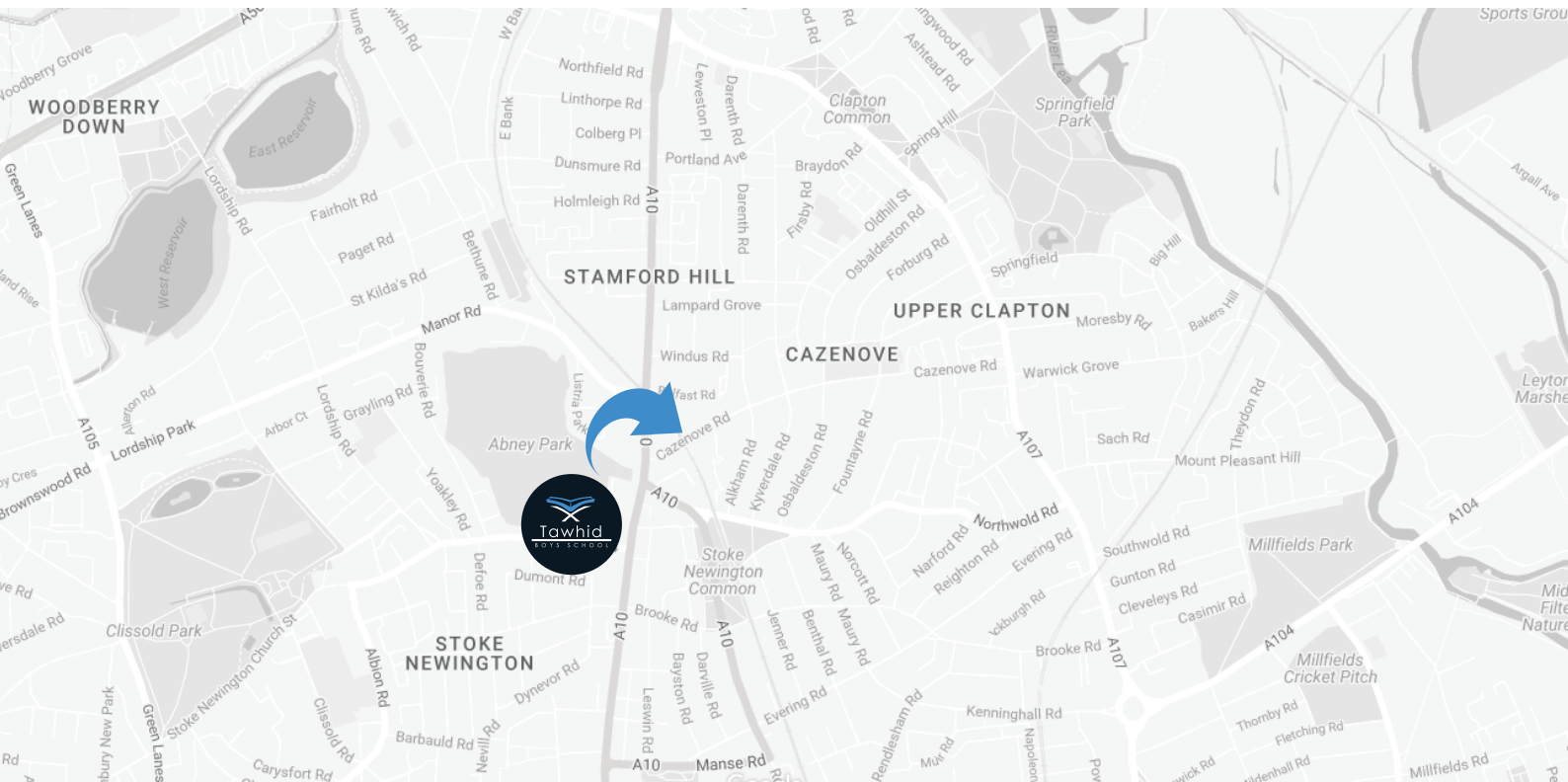
In the event that the School is over-subscribed, places will be offered in the following order of priority.

- Children living within the designated catchment area of the school who at the time of application have a brother (including children living as siblings in the same family unit) on the roll of the school and who will still be on roll at the time of the sibling's admission
- Children living outside the catchment area of the school who at the time of application have a brother (including children living as siblings in the same family unit) on the roll of the school and who will still be on roll at the time of the sibling's admission
- Children living within designated catchment area of the school on a first come first basis
- Children living within the London Borough of Hackney on a first come first basis
- Children living outside the London Borough of Hackney on a first come first basis

If the school is oversubscribed from within any of the above categories, the distance criterion will be used to prioritise applications.

- Waiting lists will be drawn up in strict accordance with the school's published admission criteria. Parents will be asked to confirm in writing that they wish their child to be placed on the waiting list and for how long (See 4 below).
- The waiting list related to the expected new intake will be reviewed once the main admission round has been completed. Late applications will then take their place alongside applications received by the deadline in accordance with the admission criteria.
- Length of time on the waiting list will be taken into account when determining priority order.
- On 31st August, the existing waiting list for admission in the new school year will be updated. If a place later becomes available parents will be informed and a place offered to their child. If they decline the offer then their child's name will be removed from the list, unless the parent request for their child to remain on the waiting list, and a new application will have to be submitted. In both cases, they will then join the queue afresh.
- There will be no new admission in Year 11. In exceptional circumstances the Management has the right to use its discretion to allow admission into Year 11.

How to Find Us



Tawhid Boys School

21 Cazenove Road, Stamford Hill, London, N16 6PA

Tel: 020 8806 2999

Email: info@tawhid.org.uk

Web: www.tawhid.org.uk

Bus Routes to Stoke Newington Station

393 Stops outside School

73, 106, 67, 149, 243, 76, 488

Our School travel plan encourages students, staff and all visitors to use sustainable modes of transport. The School has no parking facilities on its premises.

Train Stations

Stoke Newington Station - 2 minutes walk

Rectory Road Station - 10 minutes walk

Main Station Liverpool Street - 15 minutes by train

 [TawhidBoys](https://www.facebook.com/TawhidBoys)

 [TawhidBoys](https://www.instagram.com/TawhidBoys)

A group of children are kayaking on a river. They are wearing blue helmets and life jackets. The kayakers are in red Perception kayaks. The background shows a dense forest. In the top right corner, there is a quote from the Quran: "And we will unite (in paradise) those who believed with their children who followed them in belief and we will not undervalue their own actions in any way" (Al-Qur'an 52:20). The Perception logo is visible on the kayakers' gear and the kayaks themselves.

A group of children are kayaking on a river. They are wearing blue helmets and life jackets. The kayakers are in red Perception kayaks. The background shows a dense forest. In the top right corner, there is a quote from the Quran: "And we will unite (in paradise) those who believed with their children who followed them in belief and we will not undervalue their own actions in any way" (Al-Qur'an 52:20). The Perception logo is visible on the kayakers' gear and the kayaks themselves.

A group of children are kayaking on a river. They are wearing blue helmets and life jackets. The kayakers are in red Perception kayaks. The river is surrounded by dense green trees. In the top right corner, there is a quote from the Quran: "And we will unite (in paradise) those who believed with their children who followed them in belief and we will not undervalue their own actions in any way" (Al-Qur'an 52:20). The Perception logo is visible on the kayakers' gear and the kayaks themselves.



Tawhid

BOYS SCHOOL

BELIEVE | ASPIRE | ACHIEVE

DESIGN & PRINT: THEO LIVINGSTUDIO.COM

Tawhid Boys School

21 Cazenove Road, London, N16 6PA

Tel: 020 8806 2999

Email: info@tawhid.org.uk

Tawhid Boys School is a project of Tawhid Educational Trust
DFES No. 2046407 | Charity Registration No. 1085204

Chairman. Abdul Ghani Alibhai

TET registered at 111 Osbaldeston Road N16 6NP

Email aalibhai@tawhid.org.uk | Tel. 020 8806 2999

